

A review of the spider genus *Evarcha* Simon, 1902 in Middle Asia (Aranei Salticidae)

Обзор пауков рода *Evarcha* Simon, 1902 в Средней Азии (Aranei Salticidae)

S.Yu. Rakov
С.Ю. Раков

Chair of Invertebrate Zoology, Faculty of Biology and Soil Sciences, Tomsk State University, Lenin prospekt 36, Tomsk 634010, Russia.

Кафедра зоологии беспозвоночных, Биолого-почвенный факультет, Томский государственный университет, пр. Ленина 36, Томск 634010, Россия.

KEY WORDS: jumping spiders, *Evarcha*, faunistics, taxonomy, Middle Asia.

КЛЮЧЕВЫЕ СЛОВА: пауки-скакунчики, *Evarcha*, фаунистика, таксономия, Средняя Азия.

ABSTRACT: The genus *Evarcha* appears to be represented in the fauna of Middle Asia by six species, including two new: *Evarcha kirghisica* sp.n. and *E. nenilini* sp.n. Distributions for all these species are mapped. *E. laetabunda* (C.L. Koch, 1848) and *E. afghana* (Roewer, 1955) are ejected from the Middle Asian salticid fauna.

РЕЗЮМЕ: Род *Evarcha* оказался представленным в фауне Средней Азии шестью видами, в том двумя новыми: *Evarcha kirghisica* sp.n. и *E. nenilini* sp.n. Дана карта распространения всех видов. Из списка сальтицид Средней Азии исключены *E. laetabunda* (C.L. Koch, 1848) и *E. afghana* (Roewer, 1955).

Introduction

About 32 described species have hitherto been known in the genus *Evarcha* [Prószyński, 1990], including four recorded in Middle Asia, i.e. in Central Asia within the former Soviet Union [Nenilin, 1984a, 1985].

Recent collections coupled with some museum ones have allowed to considerably refine the fauna of *Evarcha* of Middle Asia which currently supports already six valid species. In addition, further two are ejected from the faunal list of Middle Asia.

1. *Evarcha laetabunda* (C.L. Koch, 1848), repeatedly reported from Middle Asia [Ashikbaev, 1973; Kaplin, 1978; Savelyeva, 1970, 1979, 1990; Nenilin, 1984a, 1985; Eskov & Marusik, 1995], has not been found in the rather abundant *Evarcha* material examined during the present study. Moreover, some of these records, e.g. by Eskov & Marusik [1995], have proved to actually belong to *E. michailovi* Logunov, 1992 (Eskov's specimens ex-

amined). Hence, all above authors are presumed to have dealt with *E. michailovi*.

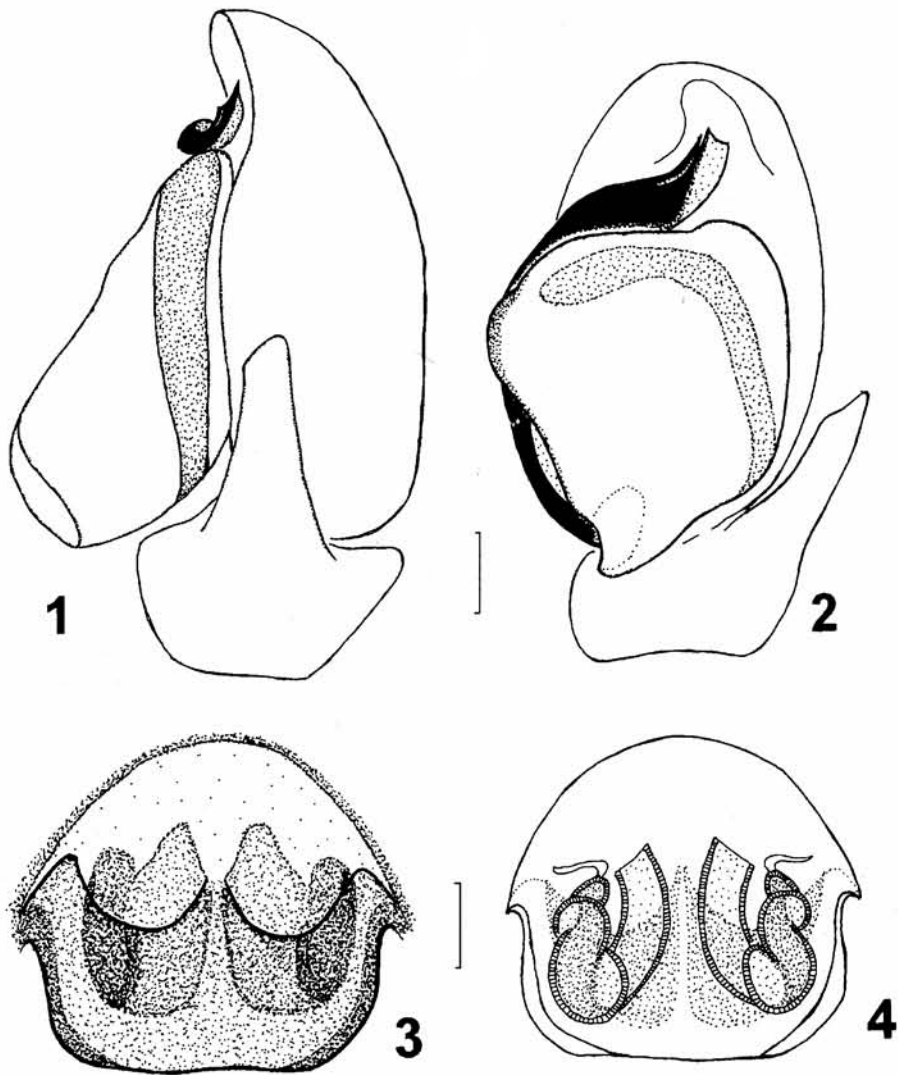
2. *E. afghana* (Roewer, 1955) has been reported from Middle Asia by Nenilin [1985]. A recent restudy [Logunov, personal communication] of the specimens determined by Nenilin as *afghana* (♀♀ only) has shown that they belong in fact to *Plexippoides flavescens* (O. P.-Cambridge, 1872) [see also Wesolowska, 1996].

Material and methods

A total of 139 specimens of *Evarcha* have been studied. They were borrowed from or housed in the following museums: ISE — the Zoological Museum of the Institute for Animal Systematics and Ecology, Russian Academy of Sciences, Novosibirsk, Russia, Dr. D.V. Logunov; SVO — personal collection of Mr. S.V. Ovtchinnikov, Bishkek, Kyrgyzstan; ZISP — the Zoological Institute of the Russian Academy of Sciences, St. Petersburg, Russia, Dr. V.I. Ovtsharenko; ZMMU — the Zoological Museum of the Moscow State University, Moscow, Russia, Dr. K.G. Mikhailov.

The names of the most important collectors are abbreviated as follows: S.Z. — S.L. Zonshtein; V.D. — V.V. Dubatolov; D.L. — D.V. Logunov; O.L. — O.V. Lyakhov; D.M. — D.A. Milko; S.O. — S.V. Ovtchinnikov; A.Z. — A.A. Zyuzin.

Abbreviations used in the figures and text: ap. — apically; d. — dorsally; Fm — femur; Mt — metatarsus; pr. — prolaterally; Pt — patella; rt. — retrolaterally; Tb — tibia; v. — ventrally. For the leg spination the system adopted is that used by Ono [1988]. The sequence of leg segments in measurement data is as follows: femur + patella + tibia + metatarsus + tarsus. All measurements are in mm.



Figs 1-4. *Evarcha arcuata* (Clerck, 1757): 1 — male palp, lateral view; 2 — ditto, ventral view; 3 — epigyne; 4 — spermathecae, dorsal view. Scale: 0.14 mm.

Рис. 1-4. *Evarcha arcuata* (Clerck, 1757): 1 — пальпа самца, латерально; 2 — то же, вентрально; 3 — эпигина; 4 — сперматека. Масштаб: 0,14 мм.

Only relevant literature sources are included. For complete sources see Kharitonov [1932, 1936] and Prószyński [1990].

Systematic part

Genus *Evarcha* Simon, 1902

Type species: *Attus falcatus* Clerck, 1757.

Diagnosis: Medium-size spiders ranging from about 4.0 to 10.0 in length. Carapace longer than broad, colouration from light yellow to dark brown; eye-field broader than long, usually darker than carapace. Clypeus vertical, narrow (0.25 mm), usually covered with white scales. Chelicerae vertical, medium in size; promargin with one tooth, retromargin with two teeth. Maxillae parallel or

slightly convergent. Labium and sternum oval. Pedicel short. Abdomen oval, its dorsum grey, usually with a paired spot and/or stripes, venter lighter than dorsum, as a rule. Female palp usual, without apical claws.

Male palp: Tibial apophysis always present, apically either sharpened (Figs 18-19) or bifurcated (Figs 10-11), sometimes (e.g. the *E. albaria* complex) tibial apophysis composed of 2-3 very strong subordinate processes [see Peng, 1993: figs 3, 11]. Tegulum either rounded (Figs 10-11, 18-19) or extended proximally (e.g. the *E. falcata* and *E. albaria* complexes). Embolus either very long, filiform (Figs 10-11), or short, rather strong and compact (Figs 1-2, 7, 4-15, 18-19).

Epigyne always with a central chitinous transverse plate, wide or narrow (cf. Fig. 12 and Zabka, 1985: fig. 188), and a single or paired depression anteriorly of it (Figs 3, 12, 20). Spermathecae consisting of several/

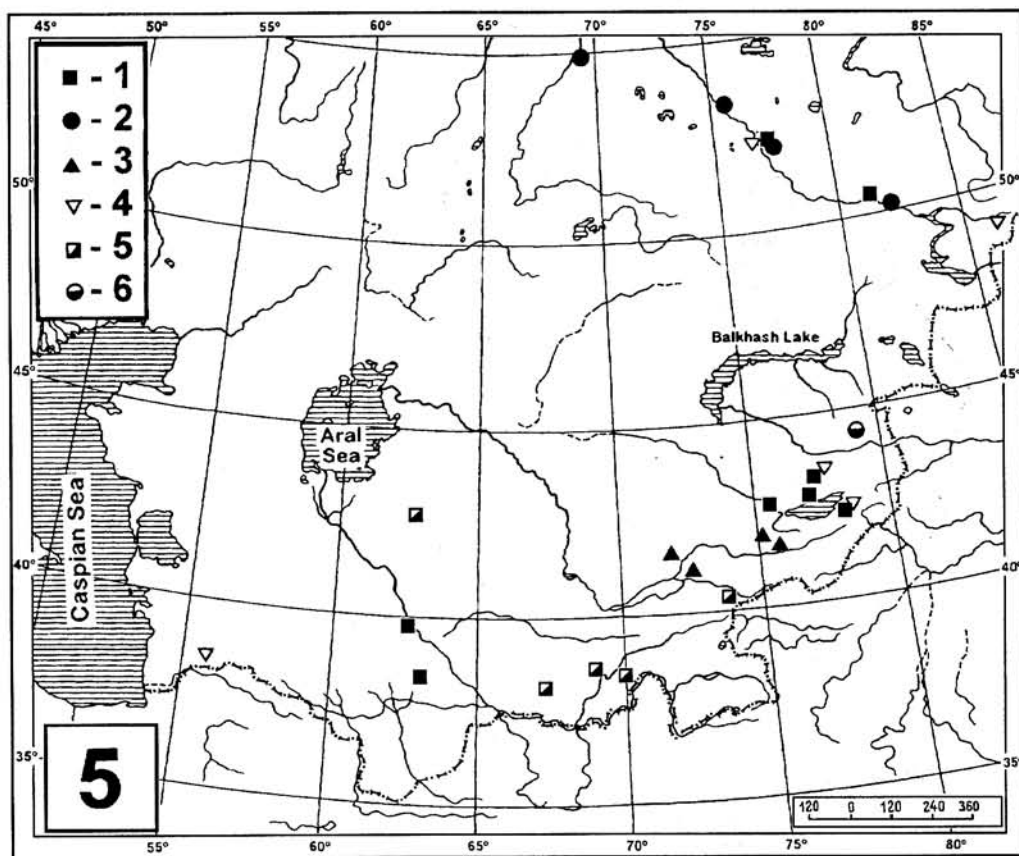


Fig. 5. Localities of *Evarcha arcuata* (1), *E. falcata* (2), *E. kirghisica* sp.n. (3), *E. michailovi* (4), *E. nenilini* sp.n. (5) and *E. sp.* (6) in Middle Asia.

Рис. 5. Места находок *Evarcha arcuata* (1), *E. falcata* (2), *E. kirghisica* sp.n. (3), *E. michailovi* (4), *E. nenilini* sp.n. (5) и *E. sp.* (6) в Средней Азии.

many loops closely fused together (Figs 9, 13, 21), with insemination ducts being either wide and membranous (Figs 17, 21) or thin and tube-like (Fig. 13). Width and length of insemination ducts apparently correlated with those of embolus, as many of the species having long and wide insemination ducts, e.g. *E. kirghisica*, show also males having a long, filiform embolus.

Survey of species

Evarcha arcuata (Clerck, 1757)

Figs 1-4.

Evarcha arcuata: Kharitonov, 1932: 173; 1936: 216; Spassky & Shnitnikov, 1937: 296; Sabirova, 1975: 79; Nenilin, 1984: 16; 1984b: 135; 1985: 130; Savelyeva, 1979: 144; 1990: 173; Mikhailov & Fet, 1994: 517; Wesolowska, 1996: 29.

Material. KAZAKHSTAN: 1 ♂ (ZISP), Almaty Area, Kiik-Bai Canyon, 13-18.08.1984, T.V. Pavlenko; 1 ♀ (ISE), Almaty (= Alma-Ata), 3.09.1991, G.A. Auezova; 1 ♂, 1 ♀ (ISE), near Almaty, Aksay Canyon, ca. 1,300 m a.s.l., 28.08.1982, Y.M. Marusik; 1 ♂ (ZMMU), same locality, highway to Medeo, 22.06.1992, E.E. Koptykbaev; 1 ♀ (ISE), Pavlodar Area, 20 km S of Pavlodar, 17.05.1992, O.L.; 9 ♂♂, 3 ♀♀ (ISE), environs of Pavlodar, Irtysh River valley, 20.05.1994, O.L.; 1 ♂, 1 ♀ (ISE), Semipalatinsk Area, Chubartau Distr., 47 km W of Kalgutty, 13.10.1990, A.Z. — KYRGHYZSTAN: 1 ♂ (ISE), W part of Kunghei-Alatau Mts., Boomskeye Canyon, Kyz-Kue, 1.06.1991,

S.O.; 1 ♀ (ZISP), Issyk-Kul Lake, Cholpon-Ata, 10.08.1977, S.Z.; 1 ♀ (ZMMU), Issyk-Kul Area, Teploklyuchenska, 21.06.1991, S.O.; 1 ♀ (ISE), same locality, 19.05.1993, D.M.; 7 ♂♂, 3 ♀♀ (ZISP), Issyk-Kul Lake, Kuturga, *Pinus* and *Populus* forest, 18.07.1977, S.Z.

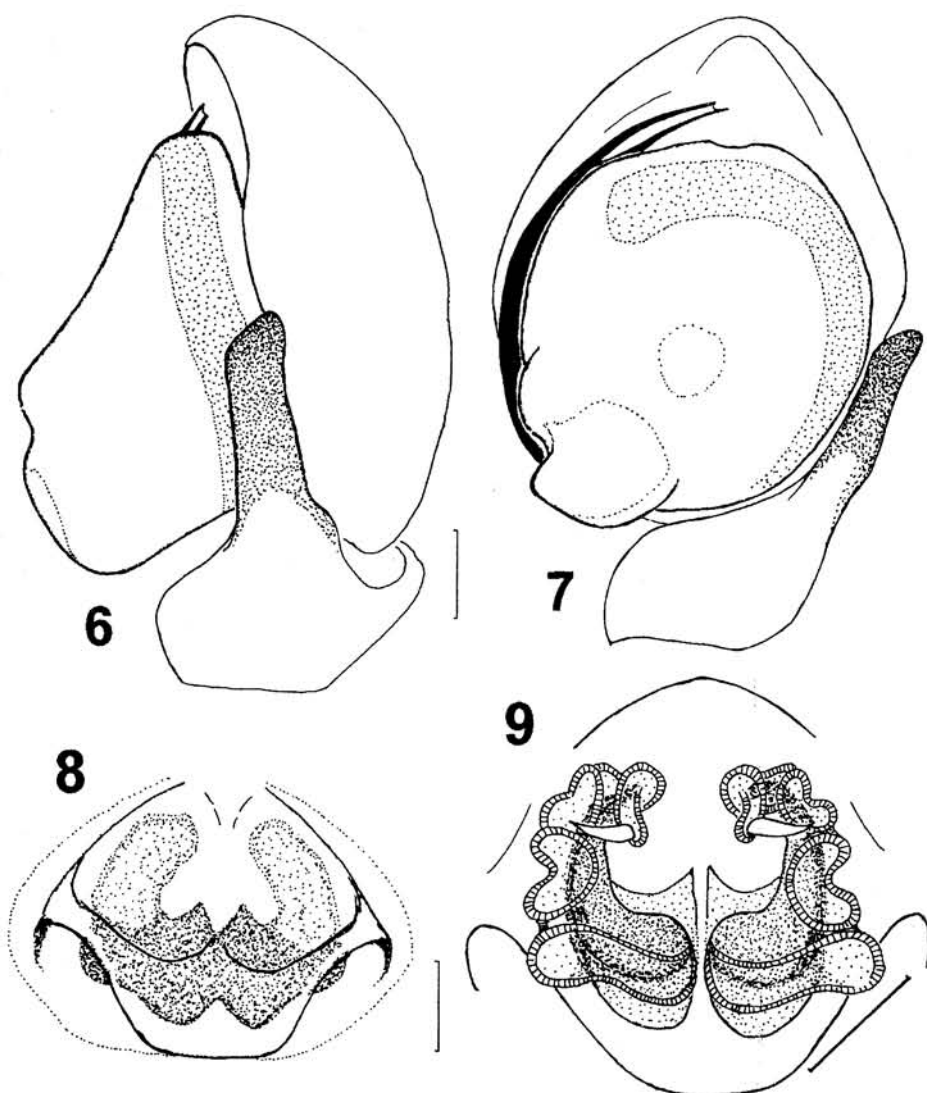
Diagnosis. *E. arcuata* is most closely related to *E. michailovi*, but the ♂♂ can be distinguished by the shape of the tibial apophysis and the embolus curved apically (Figs 1-2); the ♀♀ differ in the structure both of the epigyne and spermathecae (Figs 3-4).

Distribution. A trans-Palaeartic species hitherto recorded in Middle Asia from Kyrgyzstan: Issyk-Kul Lake (Cholpon-Ata and Chon-Uryukty), Kuturga Canyon and environs of Bishkek [Nenilin, 1984b]; Kazakhstan: Semipalatinsk and East-Kazakhstan areas [Kharitonov, 1932, 1936; Spassky & Shnitnikov, 1937; Savelyeva, 1970, 1979, 1990]; and Turkmenistan: SW-Kopetdagh Mts. [Fet, 1983; Nenilin, 1984a; Mikhailov & Fet, 1994], Repetek [Sabirova, 1975, 1977], Chardzhou Area, Amudaryinskii Reserve, Kabakly [Wesolowska, 1996]. All the localities of *E. arcuata* in Middle Asia are shown in Fig. 5.

Evarcha falcata (Clerck, 1757)

Figs 6-9.

E. blancardi: Ashikbaev, 1973: 515, 517.



Figs 6-9. *Evarcha falcata* (Clerck, 1757): 6 — male palp, lateral view; 7 — ditto, ventral view; 8 — epigyne; 9 — spermathecae, dorsal view. Scale: 0.14 mm.

Рис. 6-9. *Evarcha falcata* (Clerck, 1757): 6 — палепа самца, латерально; 7 — то же, вентрально; 8 — эпигина; 9 — сперматека. Масштаб: 0,14 мм.

E. flammata: Ermolajev, 1937: 605; Savelyeva, 1970: 85; 1979: 144.

E. falcata: Savelyeva, 1990: 173.

Material. KAZAKHSTAN: 8 ♂♂, 9 ♀♀ (ISE), N-Kazakhstan Area, Sokolovo Distr., Bolshaya Malyshka, 10.06.1986, D.L.; 5 ♂♂, 1 ♀ (ISE), Pavlodar Area, Zheleznovsk Distr., 15 km S of Mikhailovka, 28.07.1990, O.L.; 1 ♂, 1 ♀ (ISE), same area, Lebyazhynsk Distr., ca. 3 km N of Shoktal, 5.07.1990, O.L.; 1 ♂ (ISE), same area and distr., 3 km NW of Montal, 5.07.1990, O.L.

Diagnosis. Easily separable from all known *Evarcha* species by the structure of the embolus (Fig. 7) and epigyne (Fig. 6)

Distribution. A Euro-Siberian temperate species hitherto reported from E-Kazakhstan [Ermolajev, 1937; Savelyeva, 1970, 1979, 1990] and N-Kazakhstan: Chimkent, Kokchetav and Kustanay areas [Ashikbaev, 1973, 1976, 1980].

All the localities of *E. falcata* in Middle Asia are shown in Fig. 5.

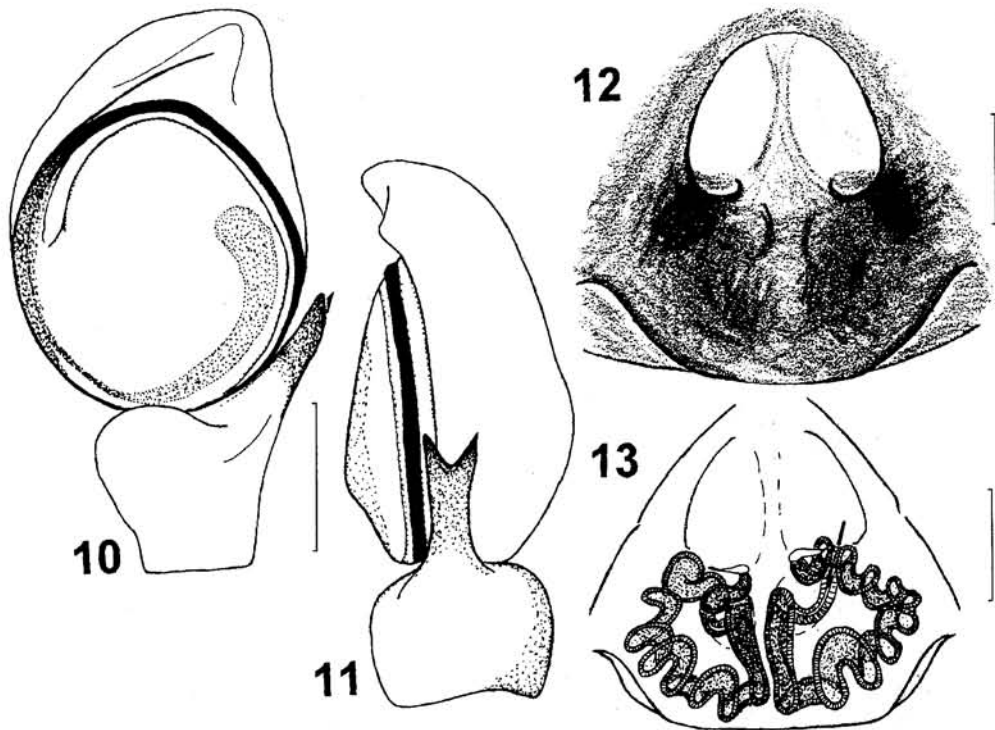
Evarcha kirghisica sp.n.

Figs 10-13.

Material. Holotype: ♂ (ISE), Kyrgyzstan, Dzhahalalabad Area, Chatkalsky Mt. Range, Sary-Chelek Reserve, ca. 2 km S of Arkit, 17-20.06.1992, A.Z. & A.A. Feodorov.

Paratypes: 1 ♂, 3 ♀♀ (ISE), together with holotype; 1 ♂ (SVO), same locality, 29.05.1994, S.O.; 1 ♂ (ZMMU), Osh Area, Tashkumyr, 6.09.1985, D.L.; 1 ♂ (ZMMU), same area, Karasu Lake, 7.08.1995, S.O.; 1 ♀ (ZMMU), Talasskaya Area, Toktogul Distr., 5 km NE of Kara-Kul, Kok-Bel Pass, ca. 1,500 m a.s.l., 28.06.1992, A.Z. & A.A. Feodorov.

Diagnosis. The ♂♂ are similar to those of *E. bulbosa* Zabka, 1985, from Viet-Nam, but differ in the shorter tibial apophysis being more deeply bifurcated at the apex (Fig. 11). The ♀♀ are similar to those of *E. gausapata* (Thorell, 1890), from Sumatra [see Prószyński, 1984: 48], but can be separated by the wider epigynal plate and the shape of the epigynal depression (Fig. 12).



Figs. 10-13. *Evarcha kirghisica* sp.n.: 10 — male palp, ventral view; 11 — ditto, lateral view; 12 — epigyne; 13 — spermathecae, dorsal view. Scale: 0.3 mm (10-11); 0.14 mm (12-13).

Рис. 10-13. *Evarcha kirghisica* sp.n.: 10 — палепа самца, вентрально; 11 — то же, латерально; 12 — эпигина; 13 — сперматека. Масштаб: 0,3 мм (10-11); 0,14 мм (12-13).

Distribution. Kyrgyzstan (Fig. 5).

Description. MALE. Measurements. Carapace 2.75 long, 2.15 wide, 1.00 high at PLE. Ocular area 1.25 long, 1.75 wide anteriorly and 1.70 wide posteriorly, diameter of AME 0.50. Abdomen 2.70 long, 1.75 wide. Cheliceral length 1.00. Length of leg segments: leg I: 1.75 + 1.00 + 1.50 + 1.00 + 0.75; leg II: 1.38 + 0.88 + 1.13 + 0.75 + 0.75; leg III: 1.75 + 0.88 + 0.88 + 1.00 + 0.88; leg IV: 1.50 + 0.88 + 1.13 + 1.13 + 0.75. Leg spination. Leg I: Fm d.0-1-1-4; Pt pr.0-1-0; Tb pr.1-1, v.2-2; Mt v.2-2ap. Leg II: Fm d.0-1-1-5; Pt r. and rt.0-1-0; Tb pr.1-1-1, rt.1-1, v.1-1-2ap.; Mt v.2-2ap. Leg III: Fm d.0-1-1-5, pr. and rt.0-1-0; Pt pr. and rt.0-1-0; Tb d.1-0-0, pr. and rt.1-1-1 v.1-2ap.; Mt pr. and rt.1-2ap., v.2-2ap. Leg IV: Fm d.0-1-1-4; Pt pr. and rt.0-1-0; Tb d.1-0-0, pr. and rt.1-1-1ap., v.1-2ap.; Mt pr. and rt.1-1-2ap., v.2-2ap. Colouration. Carapace brown. Eye field black. Sternum light brown. Chelicerae, labium and maxillae dark brown. Carapace, clypeus and palps covered with white hairs. Abdomen grey. Legs dark brown. Palpal structure as in Figs 10-11.

FEMALE. Measurements. Carapace 2.85 long, 2.25 wide, 1.45 high at PLE. Ocular area 1.20 long, 1.77 wide anteriorly and 1.75 wide posteriorly. Diameter of AME 0.50. Abdomen 3.00 long, 2.00 wide. Cheliceral length 1.04. Length of leg segments: leg I: 0.50 + 1.00 + 1.02 + 0.67 + 0.75; leg II: 1.38 + 0.70 + 0.95 + 0.70 + 0.75; leg III: 1.50 + 1.56 + 1.07 + 1.00 + 0.95; leg IV: 1.50 + 0.88 + 1.13 + 1.56 + 0.88. Leg spination. Leg I: Fm d.0-1-1-3; Pt pr.0-1-0; Tb pr.1-1, v.2-2-2ap.; Mt v.2-2ap. Leg II: Fm d.0-1-1-5; Pt pr.0-1-0; Tb pr.0-1-0, v.1-2-2ap.; Mt v.2-2ap. Leg III: Fm d.0-1-1-3; Pt pr. and rt.0-1-0; Tb pr. and

rt.1-1-1 v.2ap.; Mt pr. and rt.1-2ap., v.2-2ap. Leg IV: Fm d.0-1-1-2; Pt pr. and rt.0-1-0; Tb pr.1-1-1 and rt.0-1-0, v.2-2ap.; Mt pr. and rt.1-1-1, v.1-2ap. Colouration paler than in ♂. Carapace light brown with dark sides. Whole body covered with white hairs. Legs dark yellow with dark patches. Sternum, maxillae and labium dark yellow. Chelicerae brown. Palps yellow, covered with white hairs. Epigyne and spermathecae as in Figs 12-13.

Etymology. The species is named after Kyghyzstan, the terra typica.

Evarcha michailovi Logunov, 1992 Figs 14-17.

Evarcha michailovi Logunov, 1992b: 54-56, fig. 2-4.

Evarcha cf. laetabunda: Eskov & Marusik, 1994: 73.

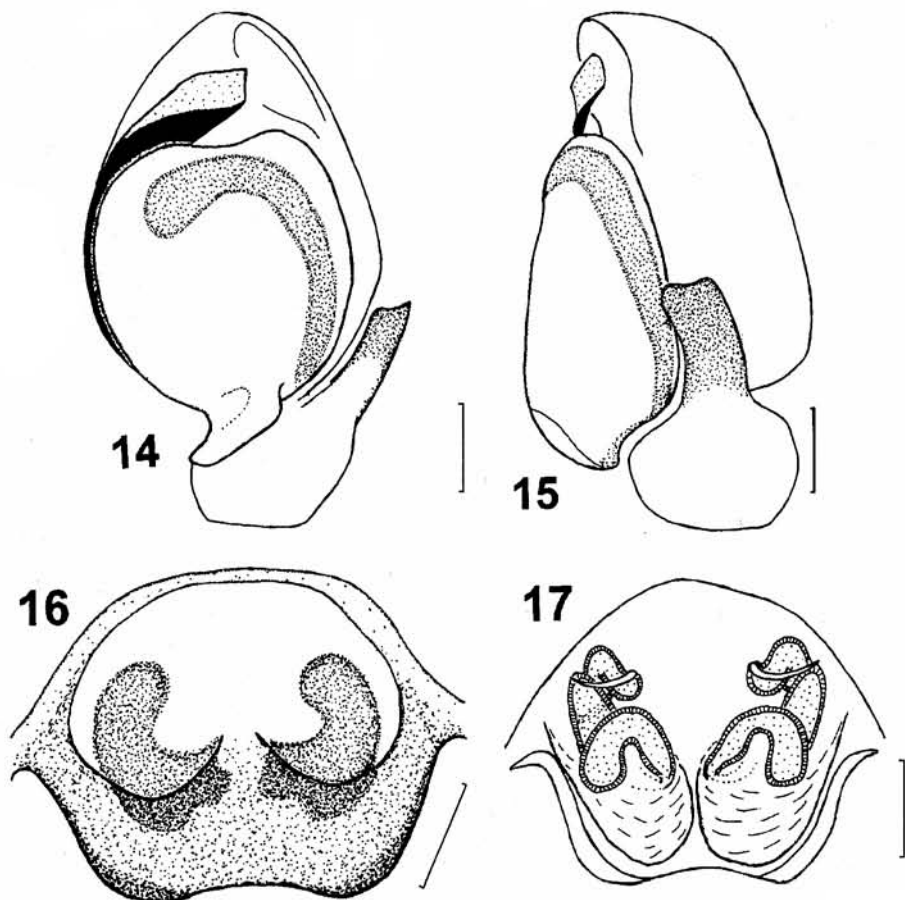
E. arcuata: Fet, 1983: 842; Nenilin, 1985: 130 [pro parte].

Material. KYRGHYZSTAN: 1 ♀ (ISE), Terskei-Alatau Mt. Range, Arasan River, 19.06.1991, S.O.; 1 ♀ (ISE), Issyk-Kul Area, Teploklyuchenka, 19.05.1993, D.M. — KAZAKHSTAN: 1 ♂, 2 ♀♀ (ISE), Pavlodar Area, Bayan-Aulsk Distr., near Kyzyl-Tau, 12.05.1990, O.L.; 38 ♂♂, 18 ♀♀ (ISE), environs of Pavlodar, Irtysh River valley, 20.05.1994, O.L.; 1 ♂ (ZMMU), Almaty Area, Almatinsky Reserve, ca. 2,000 m as.l., 2.09.1983, Y.M. MarusiĖ. — TURKMENISTAN: 1 ♂ (ZISP), SW Kopetdagh, Eldere, 17.04.1979, V.Y. Fet.

Comparative material. 3 ♂♂, 1 ♀ (ZMMU), N Mongolia, Selenghinskiy Aimak, Shamor, Orkhon River valley, meadow, 31.07-6.08.1982. K.G. Mikhailov.

Diagnosis. See [Logunov, 1992].

Distribution. A Euro-Siberian subboreal spec. hitherto reported in Middle Asia from E-Kazakhstan: Zaisan-



Figs. 14-17. *Evarcha michailovi* Logunov, 1992: 14 — male palp, ventral view; 15 — ditto, lateral view; 16 — epigyne; 17 — spermathecae, dorsal view. Scale: 0.14 mm.

Рис. 14-17. *Evarcha michailovi* Logunov, 1992: 14 — палпа самца, вентрально; 15 — то же, латерально; 16 — эпигина; 17 — сперматека. Масштаб: 0,14 мм.

skiy Dist., Saur Mt. Range [Logunov, 1992; Eskov & Marusik, 1994: *E. cf. laetabunda*], and Turkmenistan [Fet, 1983: as *E. arcuata*; Nenilin, 1985: *E. arcuata*, in part]. All the localities of *E. michailovi* in Middle Asia are shown in Fig. 5.

Evarcha nenilini sp.n.

Figs 18-21.

Material. Holotype: 1 ♂ (ISE), Uzbekistan, Bukantau Mts., Irmir Mt., Karakuduk. 9.05.1976. A.P. Kononenko.

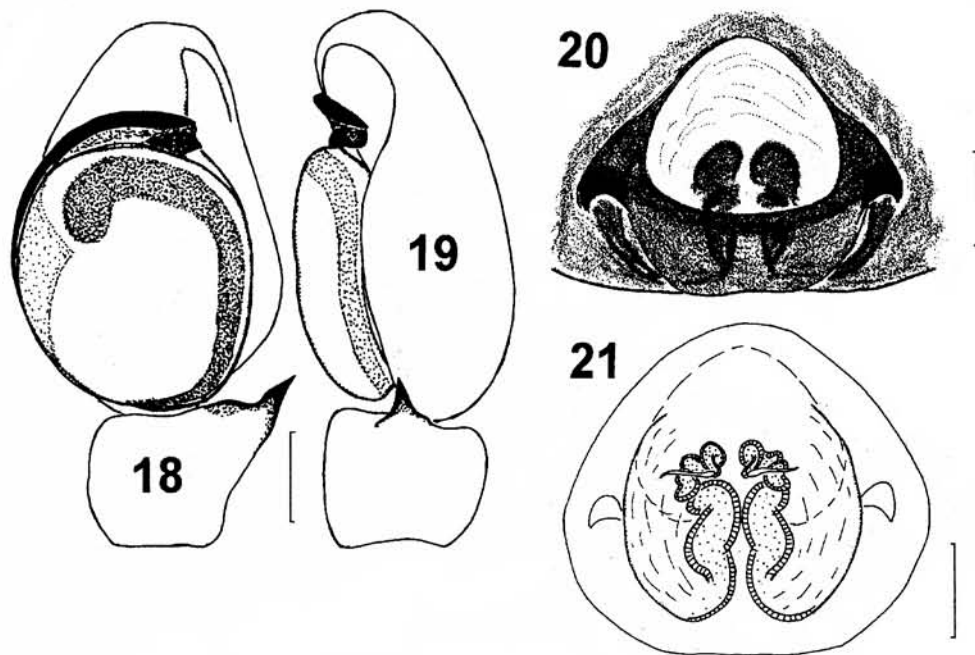
Paratypes: UZBEKISTAN: 1 ♂ (ISE), together with holotype; 1 ♂, 1 ♀ (ZMMU), foothills of Baisuntau Mt, ca. 30 km S of Baisun, 12.05.1994, S.O. — TAJIKISTAN: 1 ♂, 1 ♀ (ISE), Khovaling, ca. 1,500 m a.s.l., 11.10.1987, S.O.; 1 ♂ (ZMMU), 24 road-km of Varzob highway, 23.05.1990, coll. ? — KYRGHYZSTAN: 1 ♀ (ZMMU), Terektau (?) Mt. Range, Kumasan, 27.04.1991, S.O.

Diagnosis. The ♂♂ are very similar to those of *E. praecincta* (Simon, 1890) [sensu Wesolowska & Van Harten, 1994: figs 52-56], but can be separated by the structure both of the tibial apophysis and details of the embolus (Figs 18-19). The ♀♀ are similar to those of *E. nepos* (O.P.-Cambridge, 1872) [see Prószyński, 1984: 101], but differ in the shape of the epigynal plate (Fig. 20) and the location of the receptacles (Fig. 21).

Distribution. Uzbekistan, Tajikistan and Kyrgyzstan (Fig. 5).

Remarks. The *Evarcha* sp. reported from Tajikistan (Vakhsh and Yavan valleys) by Kononenko et al. [1974] may prove to be *E. nenilini* sp.n.

Description. MALE. Measurements. Carapace 2.00 long, 1.50 wide, 1.00 high at PLE. Ocular area 1.00 long, 1.35 wide anteriorly and 1.38 wide posteriorly. Diameter of AME 0.45. Abdomen 2.50 long, 1.50 wide. Cheliceral length 0.55. Length of leg segments: leg I: 1.02 + 0.62 + 0.88 + 0.50 + 0.50; leg II: 1.00 + 0.62 + 0.62 + 0.42 + 0.50; leg III: 1.50 + 0.75 + 0.78 + 0.27 + 0.67; leg IV: 1.25 + 0.50 + 0.62 + 0.67 + 0.58. Leg spination. Leg I: Fm d.0-1-1-3; Pt pr. and rt.0-1-0; Tb pr.1-1, v.2-2-2; Mt v.2-2ap. Leg II: Fm d.0-1-1-5; Pt pr. and rt.0-1-0; Tb pr.1-1-1, rt.0-1-0, v.1-1-2ap.; Mt v.2-2ap. Leg III: Fm d.0-1-1-5; Pt pr. and rt.0-1-0; Tb pr. and rt.1-1-1 v.1-2ap.; Mt pr. and rt.1-2ap., v.2-2ap. Leg IV: Fm d.0-1-1-2; Pt r. and rt.0-1-0; Tb pr.1-1-1 p., rt.1-1, v.1-2ap.; Mt pr.1-1-2ap., rt.1-2ap., v.2-2ap. Colouration. Carapace orange, covered with light and dark hairs. Eye field yellow, with black around eyes. Clypeus white-yellow, covered with white hairs. Sternum light yellow. Chelicerae, labium and maxillae light brown. Dorsum with a pair of longitudinal brownish stripes composed of separated patches. Back pairs of patches



Figs. 18-21. *Evarcha nenilini* sp.n.: 18 — male palp, ventral view; 19 — ditto, lateral view; 20 — epigyne; 21 — spermathecae, dorsal view. Scale: 0.14 mm.

Рис. 18-21. *Evarcha nenilini* sp.n.: 18 — палпа самца, вентрально; 19 — то же, латерально; 20 — эпигина; 21 — сперматека. Масштаб: 0,14 мм.

darker, almost black. Venter yellowish, with a median longitudinal stripe of dark hairs. Legs light brown, leg I darker than others. Tibia I and patella I and II ventrally with compact groups of black bristles. All femora infuscate dorso-apically. Palpal structure as in Figs 18-19.

FEMALE. Measurements. Carapace 2.24 long, 1.70 wide, 1.25 high at PLE. Ocular area 1.20 long, 1.60 wide anteriorly and 1.70 wide posteriorly. Diameter of AME 0.50. Abdomen 2.75 long, 1.80 wide. Cheliceral length 0.75. Length of leg segments: leg I: 1.13 + 0.75 + 0.75 + 0.55 + 0.62; leg II: 1.13 + 0.75 + 0.75 + 0.62 + 0.62; leg III: 1.62 + 0.88 + 1.56 + 0.95 + 0.88; leg IV: 1.38 + 0.62 + 0.82 + 0.88 + 0.55. Leg spination. Leg I: Fm d.0-1-1-4; Pt pr.0-1-0; Tb pr.1-1, v.2-2-2; Mt v.2-2ap. Leg II: Fm d.0-1-1-5; Pt pr.0-1-0; Tb pr.1-1, v.1-2-2ap.; Mt v.2-2ap. Leg III: Fm d.0-1-1-5; Pt pr. and rt.0-1-0; Tb pr. and rt.1-1-1 v.2ap.; Mt d.2-2ap., pr. and rt.1-1ap., v.2ap. Leg IV: Fm d.0-1-1-2; Pt pr. and rt.0-1-0; Tb d.0-2-0, pr. and rt.1-1, v.1-2ap.; Mt pr.1-1-2ap., rt.1-2ap., v.2-2ap. Colouration as in ♂, but lighter. All legs completely yellow. Abdomen anteriorly and on sides with a white line. Venter with a pair of white spots in front of spinnerets. Epigyne and spermathecae as in Figs 20-21.

Evarcha sp.

Material. Kazakhstan: 1 ♂ (ISE), Taldy-Kurgan Area, Aidarly, Teresken, 25.04.1990, V. Linsky.

Notes. This specimen has been reported by D.V. Logunov (personal communication) as belong to a new species closely related to *E. falcata*. The description will follow in a separate paper.

Acknowledgements

I wish to express my warmest thanks to the

following persons who contributed specimens for this study: Dr. A.A. Zyuzin (Alma-Ata), Mr. O.V. Lyakhov (Pavlodar), Mr. S.V. Ovtchinnikov, Dr. S.L. Zonshtein and Mr. D.A. Milko (all from Bishkek). My special thanks are extended to Dr. D.V. Logunov, of the ISE, Dr. K.G. Mikhailov, of the ZMMU, and Dr. V.I. Ovtsharenko, of the ZISP, for the opportunity to study certain material from their museums. I am again obliged to Dr. D.V. Logunov for his kind encouragement concerning this work and his improving my drawings. Finally, my thanks also go to Dr. S.I. Golovatch (Moscow) for his kind linguistic help.

References

- Ashikbaev N.Zh. 1973. [Life forms of spiders (Araneae) inhabiting wheat fields of the Kustanai Area] // Entomol. obozr. Vol.52. No.3. P.508-519 [in Russian].
- Ashikbaev N.Zh. 1976. [The spider (Araneae) fauna of wheat fields of the Kustanai Area] // Nauchnye trudy Kazakhskogo selkhoz. inst. T.19. No.1. P.20-21 [in Russian].
- Ashikbaev N.Zh. 1981. [Spiders in the biocenosis of an alfalfa field] // Ekologhiya vrediteli i boleznei rastenii v Kazakhstane i mery borby s nimi. Alma-Ata (1980). P.18-22 [in Russian].
- Ermolajev V.N. 1937. Beitrag zur Kenntnis der altaischen Spinnen // Festschr. Strand. Riga. Bd.3. S.596-606.
- Eskov K.G. & Marusik Y.M. 1995. On the spiders from the Saur Mt. Range, Eastern Kazakhstan (Arachnida: Araneae) // Beitr. Araneol. Bd.4 (1994). P.55-94.
- Fet V.Y. 1983. [The fauna of Aranei of the South-West Kopetdagh] // Entomol. obozr. Vol.62. No.4. P.835-845 [in Russian].
- Kaplin V.G. 1978. [Complexes of soil invertebrates in the sandy deserts of the southern subzone (the eastern Karakum taken

- as an example)]. Ashkhabad: Ylym Publ. 160 pp. [in Russian].
- Kharitonov D.E. 1932. Katalog der russischen Spinnen. Leningrad: AN SSSR. Publ. 206 pp.
- Kharitonov D.E. 1936. [Supplement to the catalogue of Russian spiders] // Uchen. zapiski Permsk. Univ. Vol.2. No.4. P.167-223. [in Russian].
- Kononenko A.P., Umarov Y.A., Isametdiev F.I. 1974. [Spider population of Tadzhikistan cotton fields] // Izv. Akad. nauk Tajik. SSR., otd. biol. nauki. No.4(57). P.30-33 [in Russian, with Tajik summary].
- Logunov D.V. 1992. The spider family Salticidae (Araneae) from Tuva. II. An annotated check list of species // Arthropoda Selecta. Vol.1. No.2. P.47-71.
- Mikhailov K.G. & Fet B.Y. 1994. Fauna and zoogeography of spiders (Aranei) of Turkmenistan // Fet V. & K.I. Atamurodov (eds.), Biogeography and Ecology of Turkmenistan. Kluwer Acad. Publ. P.499-524.
- Nenilin A.B. 1984a. [Materials on the fauna of the spider family Salticidae of the USSR. I. Catalogue of Salticidae of Middle Asia] // Utotchkin A.S. et al. (eds.), Fauna i ekologiya paukoobraznykh. Perm: Univ. Press. P.6-37 [in Russian].
- Nenilin A.B. 1984b. [Materials on the fauna of the spider family Salticidae of the USSR. III. Salticidae of Kirghizia] // Protsenko A.I.(ed.), Entomol. issledovaniya v Kirghizii. Frunze: Ilym Publ. No.17. P.132-143 [in Russian].
- Nenilin A.B. 1985. [Materials on the fauna of the spider family Salticidae of the USSR. II. Results of the study in the USSR] // Ovtsharenko V.I. (ed.), Fauna i ekologiya paukov SSSR. Trudy Zool. inst. AN SSSR. Vol.139. P.129-134 [in Russian].
- Ono H. 1988. A revisional study of the spider family Thomisidae (Arachnida, Araneae) of Japan. Tokyo: National Science Museum. 252 pp.
- Peng X.J., Xie L.P. & Kim J.P. 1993. Study on the spiders of the genus *Evarcha* (Araneae: Salticidae) from China // Korean Arachnol. Vol.9. P.7-18.
- Prószyński J. 1984. Diagnostic drawings of less know Salticidae (Araneae). Siedlce: WSRP. 177 pp.
- Prószyński J. 1990. Catalogue of Salticidae (Araneae). Synthesis of quotations in the world literature since 1940, with basic taxonomic data since 1758. Siedlce: WSRP. 366 pp.
- Sabirova O. 1975. [To the study of the spiders (Aranei) of the Repetek Reserve] // Izv. Akad. nauk Turkmen. SSR., ser. biol. nauki. No.6. P.79-82 [in Russian, with Turkmenian and English summaries].
- Sabirova O. 1977. [Soil fauna under sand-fixing plants in the eastern Karakum Desert]. Ashkhabad: Ylym Publ. 100 pp. [in Russian].
- Savelyeva L.G. 1970. [Fauna and zoogeographical connections of spiders of the East-Kazakhstan Area] // Biologiya i geografiya. Vol.6. P.78-88 [in Russian].
- Savelyeva L.G. 1979. [Zoogeographical complexes of spiders (Aranei) from East Kazakhstan] // Priroda i khozaystvo Vostochnogo Kazakhstana. Alma-Ata: Nauka. P.139-148 [in Russian].
- Savelyeva L.G. 1990. [Salticidae (Araneae) from the upper Cis-Irtysh region] // Abstracts, Okhrana okruzhayushchei sredy i prirodopolzovanie Priirtyshya. Ust-Kamenogorsk. No.2. P.172-174 [in Russian].
- Spassky S.A. & Shnitnikov V.N. 1937. [Materials on the spider fauna of Kazakhstan] // Trudy Kazakhskogo filiala AN SSSR. Vol.2. P.265-300 [in Russian].
- Wesołowska W. 1996. New data on the jumping spiders of Turkmenistan (Salticidae) // Arthropoda Selecta. Vol.5. Nos 1-2. P.17-53.
- Wesołowska W. & Van Harten A. 1994. The jumping spiders of Yemen. Horizons Publ. House. 86 pp.
- Zabka M. 1985. Systematic and zoogeographic study on the family Salticidae (Araneae) from Viet-Nam // Ann. zool. PAN. T.39. P.197-484.