

## Redescription of *Clubiona dubia* O. Pickard-Cambridge, 1869 (Aranei Clubionidae) from Saint Helena Island

## Переописание *Clubiona dubia* O. Pickard-Cambridge, 1869 (Aranei Clubionidae) с острова Святой Елены

K.G. Mikhailov  
К.Г. Михайлов

Zoological Museum of the Moscow State University, Bolshaya Nikitskaya Str. 6, Moscow 103009 Russia.  
Зоологический музей МГУ, ул. Большая Никитская, 6, Москва 103009 Россия.

KEY WORDS: sac spiders, *Clubiona*, redescription, St. Helena Island.

КЛЮЧЕВЫЕ СЛОВА: пауки-мешкопряды, *Clubiona*, переописание, остров Святой Елены.

ABSTRACT: *Clubiona dubia* O. Pickard-Cambridge, 1869, is redescribed from material already revised by Benoit [1977]. The genus *Bucliona* Benoit, 1977, is downgraded to subgeneric level. A new synonymy is established: *Bicluona* Michailov, 1994 = *Bucliona*.

РЕЗЮМЕ: Вид *Clubiona dubia* O. Pickard-Cambridge, 1869 переописан по материалу, ревидованному ранее Бенуа [Benoit, 1977]. Статус рода *Bucliona* Benoit, 1977 понижен до подродового. Установлен новый синоним: *Bicluona* Michailov, 1994 = *Bucliona*.

### Introduction

The spider genus *Clubiona* Latreille, 1804 is distributed almost worldwide (missing in South America) and it includes more than 350 species. The bulk of Holarctic *Clubiona* have recently been divided into four subgenera, *Clubiona* s.str., *Paracubiona* Lohmander, 1945, *Japoniona* Michailov, 1990, and *Bicluona* Michailov, 1994 [Mikhailov, 1995a, b]. Most of the extra-Holarctic representatives of the genus remain unrevised because of being insufficiently well described.

*Clubiona dubia* O. Pickard-Cambridge, 1869, was described from Saint Helena Island, with the types presumably lost [Benoit, 1977]. The species has been redescribed on the basis of new specimens and placed into the monotypic genus *Bucliona* Benoit, 1977.

The wider concept of the genus *Clubiona* accepted here allows to automatically downgrade *Bucliona* to the subgeneric status. By the structure of the genitalia, especially ♂ ones, *C. dubia* seems to be the closest to *C. jucunda* (Karsch, 1879), from East Asia. The latter species has recently been assigned to the monotypic subgenus *Bicluona* [Mikhailov, 1994].

The aim of this work is to once again describe *Clubiona dubia* with particular attention to the structure of the genitalia and morphometric characters.

All measurements are given in mm. The number of specimens measured is indicated in brackets. The following abbreviations are accepted below: Cb — cymbium, d. — dorsally, F — femur, lat. — laterally, MRAC — Musée Royal de l'Afrique Centrale, Mt — metatarsus, rl. — retrolaterally, T — tarsus, Ti — tibia, v. — ventrally.

### Taxonomic part

Genus *Clubiona* Latreille, 1804

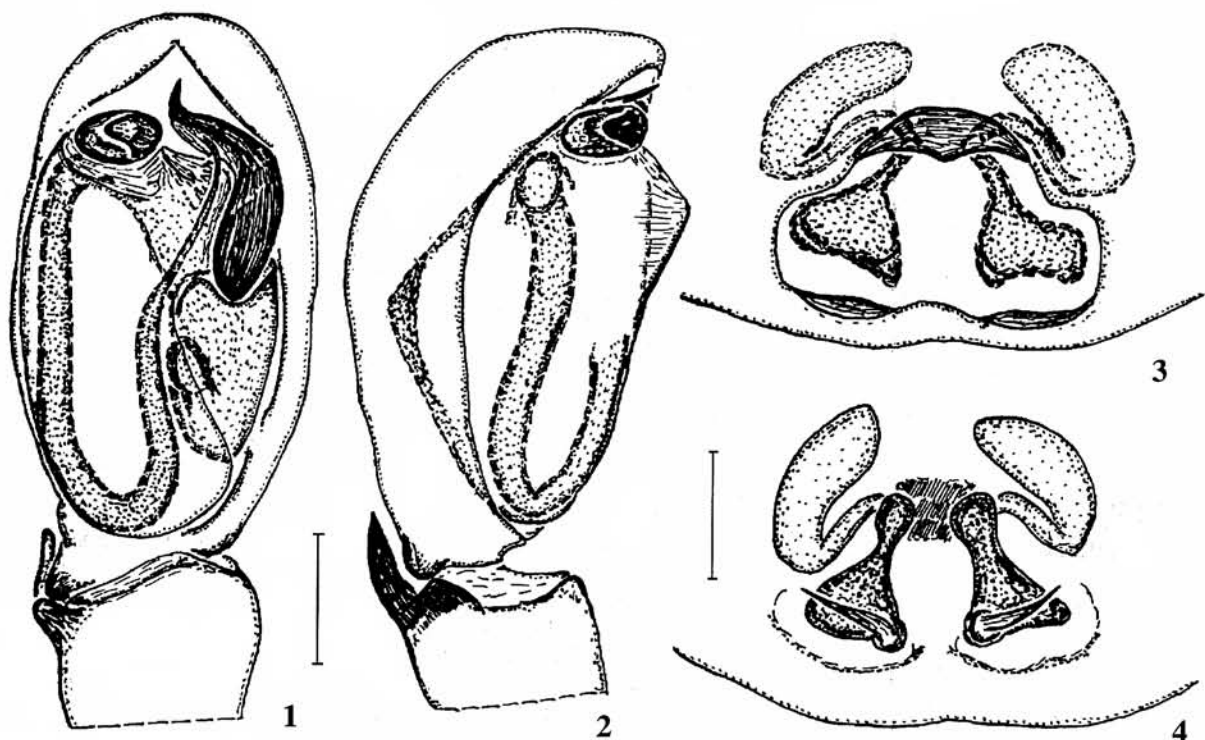
Subgenus *Bucliona* Benoit, 1977, **stat.n.**

*Bicluona* Michailov, 1994, **syn.n.**

DIAGNOSIS. By the structure of the ♂ genitalia, *Bucliona* is closer to the subgenus *Japoniona*, differing by the absence of a pronounced tegular conductor and the presence of a membranous swelling below the apical tegular apophysis of a characteristic, hook-like shape. By the structure of the ♀ genitalia, the subgenus is close to *Clubiona* s.str., differing by the larger genital groove, and to *Japoniona*, being distinguished by the copulatory tubes directed more forward than inside the vulva.

REMARKS. *Bicluona* is synonymized here under *Bucliona* mainly on the basis of the ♂ genitalic characters. A hook-like apical tegular apophysis separated from the main sclerotized part of the tegulum by a membranous swelling is peculiar to both *C. dubia* and *C. jucunda*. The embolus in *C. dubia* is shorter, not lying between the bulb and the cymbium, as in *C. jucunda*. A large (especially so in *C. dubia*) genital groove is characteristic of the epigynes of both species. The atrium is positioned in front of the spermatheca, being considerably larger in *C. jucunda* than in *C. dubia*.

*C. jucunda* differs also by a little less strongly developed leg armature, i.e., tibia I-II frequently supplied



Figs 1-4. *Clubiona dubia* O. Pickard-Cambridge, 1869, right male palp (1-2), female genitalia (3-4), ventrally (1), dorso-retrolaterally (2), epigyne (3), vulva (4).

Рис. 1-4. *Clubiona dubia* O. Pickard-Cambridge, 1869, правый палец самца (1-2), гениталии самки (3-4), вентрально (1), дорсо-ретролатерально (2), эпигина (3), вульва (4).

with an incomplete set of ventral spines (typically it has to be 2.2), whereas an additional apical spine is peculiar to *C. dubia*. A small *Cheiracanthium*-like swelling of the chelicerae is characteristic of the ♂ of *C. dubia*.

DISTRIBUTION. St. Helena Island; East Asia: Far East of Russia, Japan, Korea, China.

The close resemblance of *C. dubia* and *C. latitans* Pavesi, 1883, claimed by Benoit [1977: 71], the latter taxon from Ethiopia, requires re-examination of African material.

*Clubiona (Bucliona) dubia* O. Pickard-Cambridge, 1869

Figs 1-4.

*Bucliona dubia* — Benoit, 1977: 69-71, figs 26-27.

MATERIAL EXAMINED (all in MRAC). Ste. Hélène: 1 ♂ (neotype, designated by Benoit as "neallotype"); 1 ♀, S.W. Thompson's Wood, 1,700-1,800 ft. 23.1.1965; 1 ♂, 2 ♀♀, 1 juv., Basse Fisher's Valley, 100 ft., 14-16.12.1965; 1 ♂, 1 ♀, 2 juv., the same place, 1,000 ft., 6.01.1966, all leg. by P. Basilewsky, P. Benoit & N. Leleup, det. by P.L.G. Benoit in 1970.

DIAGNOSIS. Differs from *C. jucunda* by the shorter embolus not lying between the bulb and the cymbium, as well as by the larger genital groove and subequal size of the atrium and spermatheca. The ♂ is distinguished by the small *Cheiracanthium*-like swelling of the chelicerae, so the cheliceral teeth are remote from the basis of the cheliceral claw.

REDESCRIPTION. MALE (3). Total length 5.25-7.75. Carapace length 2.40-3.60, width 1.70-2.70, their

ratio 1.33-1.41. Carapace and chelicerae reddish-brown or straw-coloured, legs straw-coloured. Leg measurements:

| leg: | I    | II        | III           | IV        |           |
|------|------|-----------|---------------|-----------|-----------|
| F    | ♂(3) | 1.88-2.60 | 2.60-2.75 (2) | 1.50-2.08 | 2.13-2.80 |
|      | ♀(4) | 1.70-2.63 | 1.93-2.65     | 1.63-2.25 | 2.23-2.98 |
| Pt   | ♂(3) | 1.03-1.48 | 1.48-1.50 (2) | 0.78-1.10 | 0.95-1.33 |
|      | ♀(4) | 1.10-1.55 | 1.13-1.55     | 0.90-1.18 | 1.05-1.50 |
| Ti   | ♂(3) | 1.83-2.55 | 2.68-2.88 (2) | 1.10-1.50 | 1.83-2.38 |
|      | ♀(4) | 1.90-2.23 | 1.65-2.38     | 1.10-1.48 | 1.83-2.40 |
| Mt   | ♂(3) | 1.43-1.98 | 2.08-2.20 (2) | 1.35-1.85 | 2.20-3.00 |
|      | ♀(4) | 1.18-1.70 | 1.28-1.80     | 1.25-1.68 | 2.20-2.95 |
| T    | ♂(3) | 0.75-1.00 | 1.00-1.05 (2) | 0.58-0.78 | 0.55-0.88 |
|      | ♀(4) | 0.75-0.98 | 0.75-0.98     | 0.53-0.70 | 0.68-0.88 |

Leg armature: F I-II d.1.1.2, III-IV d.1.1.3, Pt III-IV rl.1, Ti I-II v.2.2.1 (2.2), III d.2.2, v.1.1.2 (1.2), IV d.2.2, v.1.1.2, Mt I-II v.2, III d.2.1.2, lat.1.2 (2.2), v.2.2, IV d.2.1.2, lat.2.2, v.2.1.2.

Palp as in Figs 1-2. Lengths of Cb, Ti, Pt, and F are 0.68-0.85, 0.43-0.63, 0.43-0.65, and 0.88-1.38, respectively.

Abdomen pale, more reddish-brown dorsally than ventrally, its length 3.00-4.20, width 1.45-2.25, their ratio 1.87-2.07.

FEMALE (4). Carapace length 6.50-9.50, width

2.80-4.05, their ratio 1.37-1.48. Carapace reddish-brown, chelicerae reddish-brown or chestnut coloured, legs straw-coloured. Leg measurements as in Table. Leg armature as in male, but Ti I-II v.2.2, III d.2.2, v.1.1.2 (1.1.1, 1.1), IV d.2.2, v.1.1.2 (1.1.1).

Abdomen pale or grey, its length 3.70-6.00, width 2.20-3.65, their ratio 1.64-1.86. Epigyne as in Figs. 3-4. DISTRIBUTION. St. Helena Island.

ACKNOWLEDGMENTS. I am grateful to Dr. Rudy Jocqué, curator of the arachnids at the Musée Royal de l'Afrique Centrale, Tervuren, Belgium for sending me the relevant specimens of *Clubiona dubia* under his care.

## References

- Benoit, P.L.G. 1977. Fam. Clubionidae // La faune terrestre de l'île de Sainte-Hélène. 4ème pt. / Ann. Mus. roy. Afr. centr. Sér.8 (Sci. Zool.). No.220. P.64-81.
- Mikhailov, K.G. 1994. [*Bicluona* Michailov, subgen.n., a new subgenus of the spider genus *Clubiona* (Aranei, Clubionidae) from East Asia] // Zool. zhurn. Vol.73. No.11. P.52-57 [in Russian, with English summary].
- Mikhailov, K.G. 1995a. [Formation of infrageneric groupings in the spider genus *Clubiona* (Aranei, Clubionidae): a typological approach] // Ibid. Vol.74. No.4. P.70-81 [in Russian, with English summary].
- Mikhailov, K.G. 1995b. Erection of infrageneric groupings within the spider genus *Clubiona* Latreille, 1804: a typological approach // Arthropoda Selecta. Vol.4. No.2. P.33-48.